

**GENERAL NOTES:**

1. ALL EROSION AND SEDIMENTATION CONTROL MEASURES IN PLACE PRIOR TO INITIATION OF ANY CLEARING, GRUBBING, OR OTHER LAND DISTURBANCE. CONTRACTOR SHALL COMPLY WITH ALL REQUIREMENTS OF THE MS DEPARTMENT OF ENVIRONMENTAL QUALITY PERTAINING TO EROSION CONTROL AND STORM WATER MANAGEMENT. REQUIREMENTS SHALL INCLUDE, BUT SHALL NOT BE LIMITED TO, THOSE SPECIFIED IN MDEQ LETTER LISTING STORM WATER REQUIREMENTS FOR SMALL CONSTRUCTION ACTIVITIES THAT DISTURB ONE (1) ACRE TO LESS THAN (5) ACRES.
2. ELEC. MECH AND PLUMBING TO PROVIDE FOR UTILITY CONNECTIONS. CONTRACTOR TO COORDINATE WITH ALL UTILITY COMPANIES EXACT LOCATIONS, DEPTHS, POINTS OF SERVICE CONNECTIONS FOR PROTECTION AND TO IDENTIFY UTILITIES TO REMAIN IN PLACE.
3. SURVEY BASE DATA PROVIDED BY: BARNES SURVEYING, LLC 691-293-7878. ALL ELEVATIONS SHOWN ARE IN REFERENCE TO SURVEY BENCHMARK TO BE VERIFIED BY THE CONTRACTOR.
4. SEE GEOTECHNICAL INVESTIGATION REPORT FOR FINDINGS OF SOILS, SITE CHARACTERISTICS & RECOMMENDATIONS RELATED TO FOUNDATION AND PAVEMENT DESIGN AND CONSTRUCTION. ALL WORK TO FOLLOW THESE REPORTS.
5. STOCKPILE EXISTING TOPSOIL FOR REUSE IN ALL AREAS TO RECEIVED LAWN OR PLANTING MATERIALS WHICH SHALL BE ROUGH GRADED FOR PLACEMENT OF 1" TOPSOIL AT LAWN AREAS AND 4" TOPSOIL AT PLANTING AREA WITH CONSIDERATIONS FOR SOIL AMENDMENTS AND MULCHING. PROVIDE BERMS AT PLANTED ISLANDS TO CREATE MIN 2% DRAINAGE SLOPES AT PLANTED AREAS.
6. VERIFY POSITIVE DRAINAGE THROUGHOUT ALL PAVED AND PLANTED AREAS. NOTIFY OWNER/PROFESSIONAL PRIOR TO ANY FORMING, GRADING, SITE AND CONCRETE WORK IF POSITIVE DRAINAGE IS NOT ABOVE 1.25% ON PAVEMENT, 2% IN PLANTINGS NOR AT THE SLOPES AS SHOWN ON PLANS.
7. VERIFY ALL SLEEVING LOCATIONS AND SIZES PRIOR TO CONCRETE FORMING AND POURING INCLUDING: IRRIGATION, SIGNAGE, ELECTRICAL, ETC.
8. CONTRACTORS TO REVIEW PLANS WITH OWNER/PROFESSIONAL PRIOR TO START OF WORK PHASES ON: LAYOUT FORMING, CONCRETE POURS, JOINTING, ELEVATIONS, GRADES, SLEEVING, ETC. TO VERIFY PROJECT PLAN UNDERSTANDING AND REQUEST OF ANY ADDITIONAL INFORMATION NEEDED. NOTIFY OWNER/PROFESSIONAL OF ANY SITE ISSUES AND/OR PLAN AMENDMENTS AND RESOLUTION BEFORE PROCEEDING WITH PROJECT INSTALLATION.

MISSISSIPPI ONE CALL - 811 or 1.800.227.6477

**SITE SUMMARY**

TOTAL SITE - 2.2356 Acres (97,383sf)  
 BLDG - 3,800sf CANOPY - 7,400sf PAVEMENT - 38,475sf  
 GREEN SPACE - 55,000sf  
 8 BUG PREP SPACES 24 COVERED VACUUM SPACES

PROVIDED	REQD
170'	50' MINIMUM DISTANCE TO INTERSECTION (Principal or Minor Arterial)
2.23 AC	0.5 AC INDEPENDENT COMMERCIAL USES
250'	200' MINIMUM LOT WIDTH
57'	25' FRONT YARD BLDG SETBACK - Gluckstadt Road
16'	15' FRONT YARD LANDSCAPE AREA - Gluckstadt Road
46'	24' SIDE YARD BLDG SETBACK - Dees Way (5' Gluckstadt Road Bldg Area)
10.5'	10' SIDE YARD LANDSCAPE AREA - Dees Way (5' Gluckstadt Road Landscape Area)
0'	0' REAR YARD BLDG SETBACKS
32 1/2'	40' MAX BLDG HEIGHT

**LEGEND:** DIMENSIONS PROVIDED ARE APPROXIMATE AND ON SITE. CONTRACTOR TO VERIFY AND ADJUST AS NECESSARY.

- 6" X Z W CONCRETE CURB & GUTTER - 4,000 PSI
- 6" H CONCRETE CURB INTEGRAL - 4,000 PSI
- TYPE 1 CONCRETE - VEHICULAR CONCRETE PAVEMENT - 4,000 PSI @ 28 DAYS W/ MICRO SYNTHETIC FIBER BASF F100 - 1.5 LB/CY/D
- SEE ARCHITECTURAL FOR DUMPSTER PAVEMENT REQUIREMENTS
- TYPE 2 CONCRETE - PEDESTRIAN SIDEWALK - 4,000 PSI @ 28 DAYS W/ MICRO SYNTHETIC FIBER BASF F100 - 1.5 LB/CY/D
- PROVIDE 2X2 PANELS W/ LIGHT, MEDIUM BROOM FINISHES FOR REVIEW AND APPROVAL PRIOR TO CONCRETE INSTALLATION
- 6" IRRIGATION SLEEVE - SCH 40 PVC
- 15" DEPTH BELOW FINAL FINISH GRADE W/ END CAPS
- MARK W/ ORANGE PAINTED FLUSH DRIVEN WOOD STAKES
- HDPE DRAINAGE PIPE - SIZE AND LINEAR FOOTAGE ON PLAN ARE APPROXIMATE. VERIFY LENGTHS ON SITE.
- DIMENSIONS TO BACK OF CURB UNLESS NOTED OTHERWISE. PARKING SPACES AT 90 DEGREES UNLESS NOTED OTHERWISE. ALL PARKING SPACE STRIPING - 4" WHITE PAINT STRIPING.
- EXISTING CONTOUR
- PROPOSED CONTOUR
- +347.0 SPOT ELEVATION
- BLDG CANOPY
- TO - TOP OF CURB
- BC - BOTTOM OF CURB
- TOR - TOP OF RAMP
- BOR - BOTTOM OF RAMP
- TOW - TOP OF WALL
- CI - CURB INLET
- GI - GRATE INLET
- JB - JUNCTION BOX
- RCP - REINFORCED CONCRETE PIPE
- IJ - ISOLATION JOINT
- CSTJ - CONSTRUCTION JT
- CT - CONTROL JOINT
- SITE LIGHTING - SEE ELECTRICAL
- WHITE PAINTED 6" LENGTH DIRECTIONAL ARROW

20 0 20

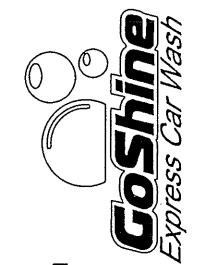
1 SITE LAYOUT PLAN  
 LA2-0 SCALE: 1"=20'-0"

Joseph  
 Architecture PA  
 137 West Peace Street  
 Canton, Mississippi  
 601 855-0123  
 jarr.hiz

Christopher B. Hoffman  
 LANDSCAPE  
 ARCHITECT

MASTER & SITE PLANNING & DESIGN  
 P.O. Box 1134 - Collins, Mississippi 39068-1134  
 601.726.4872 • 601.925.4793  
 chhla@bellestoutllc.net

PRELIMINARY  
 FOR SITE PLAN  
 REVIEW ONLY



113 DEES WAY ROAD  
 MADISON, MISSISSIPPI  
 SITE PLAN REVIEW - NOT FOR CONSTRUCTION  
 VERACITY, LLC  
 GO SHINE EXPRESS CAR WASH

PROJECT: 1904  
 DATE: 08.15.2019  
 REV:  
 LA2-0



Qty 2 - Lighted Channel Letters Mounted On Building Tower 55 Sq/Ft

IF SIGN REQUIRES POWER, BUDGET SIGNS IS NOT RESPONSIBLE FOR SUPPLYING POWER FROM BREAKER BOX TO SIGN. IF POWER IS WITHIN 5' OF SIGN, BUDGET SIGNS WILL HOOK UP AT TIME OF INSTALL OF SIGN.



PHONE: (601) 354-4977  
 FAX: (601) 354-4987  
 budgetsigns@comcast.net

**PROJECT:**

GoShine Car Wash

**CONTACT:**

Bridgeforth Rutledge  
 601-291-0211

**LOCATION:**

Dees Way & Gluckstadt Rd.

**CUSTOMER APPROVAL:**

**REVISION:**

(1)  (2)  (3)  (4)

**REPRESENTATIVE:**

601-354-4977

**ARTIST:**

**DATE:**

8-15-19

**SCALE:**

**FILE NAME:**

GoShineCarWash.pdf

" THIS DESIGN IS THE EXCLUSIVE PROPERTY OF BUDGET SIGNS. ALL RIGHTS ARE RESERVED. NO COPY OR REPRODUCTIONS IN WHOLE OR PART WITHOUT THE PRIOR WRITTEN CONSENT OF BUDGET SIGNS BY RECEIPT HEREOF THE HOLDER AGREES NOT TO USE THE INFORMATION OR DISCLOSE IT TO ANY THIRD PARTY. THE COLORS REPRESENTED HEREIN ARE THE CLOSEST POSSIBLE MATCH TO ACTUAL PROPOSED MATERIAL COLORS."





Elevation Facing West (Dees Way)

IF SIGN REQUIRES POWER, BUDGET SIGNS IS NOT RESPONSIBLE FOR SUPPLYING POWER FROM BREAKER BOX TO SIGN. IF POWER IS WITHIN 5' OF SIGN, BUDGET SIGNS WILL HOOK UP AT TIME OF INSTALL OF SIGN.



PHONE: (601) 354-4977  
 FAX: (601) 354-4987  
 budgetsgns@comcast.net

**PROJECT:**

GoShine Car Wash

**CONTACT:**

Bridgeforth Rutledge  
 601-291-0211

**LOCATION:**

Dees Way & Gluckstadt Rd.

**CUSTOMER APPROVAL:**

**REVISION:**

(1)  (2)  (3)  (4)

**REPRESENTATIVE:**

601-354-4977

**ARTIST:**

**DATE:**

8-15-19

**SCALE:**

**FILE NAME:**

GoShineCarWash.pdf

" THIS DESIGN IS THE EXCLUSIVE PROPERTY OF BUDGET SIGNS. ALL RIGHTS ARE RESERVED. NO COPY OR REPRODUCTIONS IN WHOLE OR PART WITHOUT THE PRIOR WRITTEN CONSENT OF BUDGET SIGNS BY RECEIPT HEREOF THE HOLDER AGREES NOT TO USE THE INFORMATION OR DISCLOSE IT TO ANY THIRD PARTY. THE COLORS REPRESENTED HEREIN ARE THE CLOSEST POSSIBLE MATCH TO ACTUAL PROPOSED MATERIAL COLORS."



Elevation Facing North (Gluckstadt Road)

IF SIGN REQUIRES POWER, BUDGET SIGNS IS NOT RESPONSIBLE FOR SUPPLYING POWER FROM BREAKER BOX TO SIGN. IF POWER IS WITHIN 5' OF SIGN, BUDGET SIGNS WILL HOOK UP AT TIME OF INSTALL OF SIGN.



PHONE: (601) 354-4977  
 FAX: (601) 354-4987  
 budgetsigns@comcast.net

**PROJECT:**

GoShine Car Wash

**CONTACT:**

Bridgeforth Rutledge  
 601-291-0211

**LOCATION:**

Dees Way & Gluckstadt Rd.

**CUSTOMER APPROVAL:**

**REVISION:**

(1)  (2)  (3)  (4)

**REPRESENTATIVE:**

601-354-4977

**ARTIST:**

**DATE:**

8-15-19

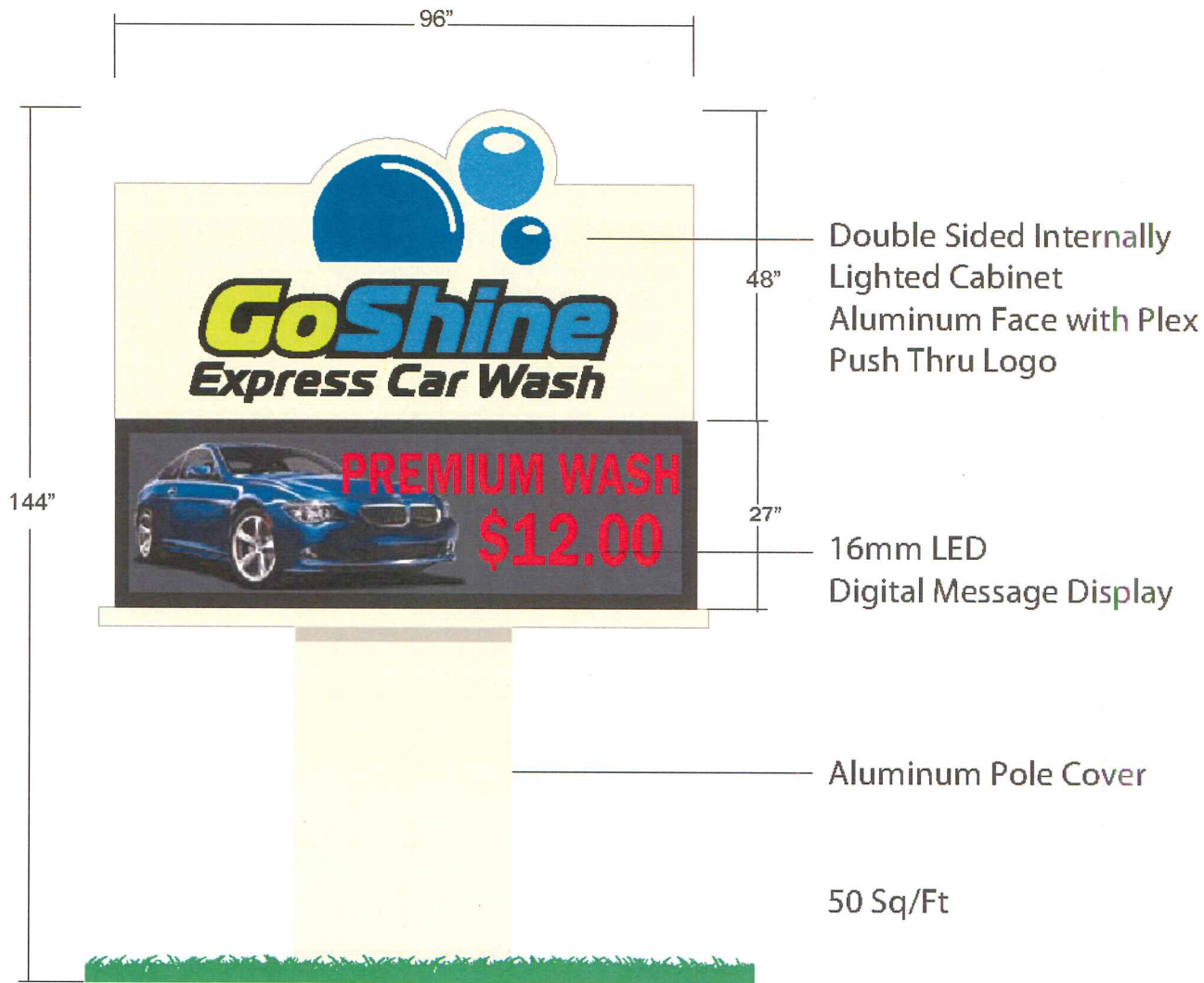
**SCALE:**

**FILE NAME:**

GoShineCarWash.pdf

**" THIS DESIGN IS THE EXCLUSIVE PROPERTY OF BUDGET SIGNS. ALL RIGHTS ARE RESERVED. NO COPY OR REPRODUCTIONS IN WHOLE OR PART WITHOUT THE PRIOR WRITTEN CONSENT OF BUDGET SIGNS BY RECEIPT HEREOF THE HOLDER AGREES NOT TO USE THE INFORMATION OR DISCLOSE IT TO ANY THIRD PARTY. THE COLORS REPRESENTED HEREIN ARE THE CLOSEST POSSIBLE MATCH TO ACTUAL PROPOSED MATERIAL COLORS."**





PHONE: (601) 354-4977  
 FAX: (601) 354-4987  
 budgetsigs@comcast.net

**PROJECT:**

GoShine Car Wash

**CONTACT:**

Bridgeforth Rutledge  
 601-291-0211

**LOCATION:**

Dees Way & Gluckstadt Rd.

**CUSTOMER APPROVAL:**

**REVISION:**

(1)  (2)  (3)  (4)

**REPRESENTATIVE:**

601-354-4977

**ARTIST:**

**DATE:**

8-15-19

**SCALE:**

**FILE NAME:**

GoShineCarWash.pdf

IF SIGN REQUIRES POWER, BUDGET SIGNS IS NOT RESPONSIBLE FOR SUPPLYING POWER FROM BREAKER BOX TO SIGN. IF POWER IS WITHIN 5' OF SIGN, BUDGET SIGNS WILL HOOK UP AT TIME OF INSTALL OF SIGN.

" THIS DESIGN IS THE EXCLUSIVE PROPERTY OF BUDGET SIGNS. ALL RIGHTS ARE RESERVED. NO COPY OR REPRODUCTIONS IN WHOLE OR PART WITHOUT THE PRIOR WRITTEN CONSENT OF BUDGET SIGNS BY RECEIPT HEREOF THE HOLDER AGREES NOT TO USE THE INFORMATION OR DISCLOSE IT TO ANY THIRD PARTY. THE COLORS REPRESENTED HEREIN ARE THE CLOSEST POSSIBLE MATCH TO ACTUAL PROPOSED MATERIAL COLORS."

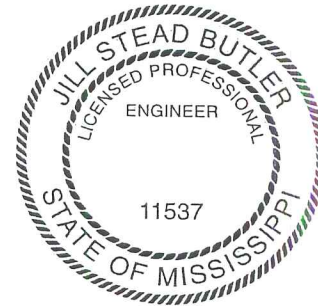
Go Shine Carwash, Gluckstadt, Mississippi

Total drainage area = 1.04 acres.

Storm	Preproject flow (cfs)	Postproject flow (cfs)	Routed
100-yr	6.88	9.13	6.28

Hydraflow Hydrographs by Intellisolve was used to compute the runoff hydrographs. The attached computations show the runoff parameters and the results for various storm events.

Underground stormwater detention is provided via a 48" pipe. This will require a junction box. The outlet should be a 12" pipe of about 40-ft length, to extend into the existing creek.



*Jill Stead Butler*

# Hydrograph Return Period Recap

Hyd. No.	Hydrograph type (origin)	Inflow Hyd(s)	Peak Outflow (cfs)								Hydrograph description
			1-Yr	2-Yr	3-Yr	5-Yr	10-Yr	25-Yr	50-Yr	100-Yr	
1	SCS Runoff	-----	1.44	1.88	-----	2.72	3.51	4.72	5.76	6.88	Preproject Site
2	SCS Runoff	-----	3.32	3.85	-----	4.80	5.65	6.93	8.00	9.13	Post-project Site
3	Reservoir	2	2.90	3.30	-----	3.89	4.40	5.12	5.68	6.28	Pipe Storage Detention

# Hydrograph Report

## Hyd. No. 1

### Preproject Site

Hydrograph type	= SCS Runoff	Peak discharge	= 6.88 cfs
Storm frequency	= 100 yrs	Time interval	= 2 min
Drainage area	= 1.04 ac	Curve number	= 75
Basin Slope	= 3.0 %	Hydraulic length	= 340 ft
Tc method	= LAG	Time of conc. (Tc)	= 9 min
Total precip.	= 9.35 in	Distribution	= Type III
Storm duration	= 24 hrs	Shape factor	= 484

Hydrograph Volume = 23,688 cuft

### Hydrograph Discharge Table

#### Time -- Outflow (hrs      cfs)

12.10      6.88 <<

...End



# Hydrograph Report

Hydraflow Hydrographs by Intelisolve

## Hyd. No. 2

Post-project Site

Hydrograph type	= SCS Runoff	Peak discharge	= 9.13 cfs
Storm frequency	= 100 yrs	Time interval	= 2 min
Drainage area	= 1.04 ac	Curve number	= 95
Basin Slope	= 0.0 %	Hydraulic length	= 0 ft
Tc method	= USER	Time of conc. (Tc)	= 5 min
Total precip.	= 9.35 in	Distribution	= Type III
Storm duration	= 24 hrs	Shape factor	= 484

Hydrograph Volume = 30,957 cuft

## Hydrograph Discharge Table

**Time -- Outflow**  
(hrs      cfs)

12.07      9.13 <<

...End

# Hydrograph Report

Hydraflow Hydrographs by Intelisolve

## Hyd. No. 3

Pipe Storage Detention

Hydrograph type = Reservoir  
 Storm frequency = 100 yrs  
 Inflow hyd. No. = 2  
 Max. Elevation = 272.72 ft

Peak discharge = 6.28 cfs  
 Time interval = 2 min  
 Reservoir name = Pipe  
 Max. Storage = 2,086 cuft

Storage Indication method used.

Outflow hydrograph volume = 30,957 cuft

### Hydrograph Discharge Table

Time (hrs)	Inflow cfs	Elevation ft	Clv A cfs	Clv B cfs	Clv C cfs	Clv D cfs	Wr A cfs	Wr B cfs	Wr C cfs	Wr D cfs	Exfil cfs	Outflow cfs
12.13	6.36	272.72 <<	6.28	-----	-----	-----	-----	-----	-----	-----	-----	6.28 <<

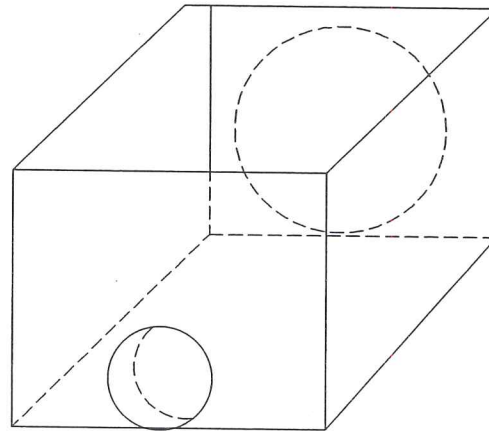
...End





NOTE: PROVIDE GRATE IN TOP

TOP OF BOX = 271.0 +/-



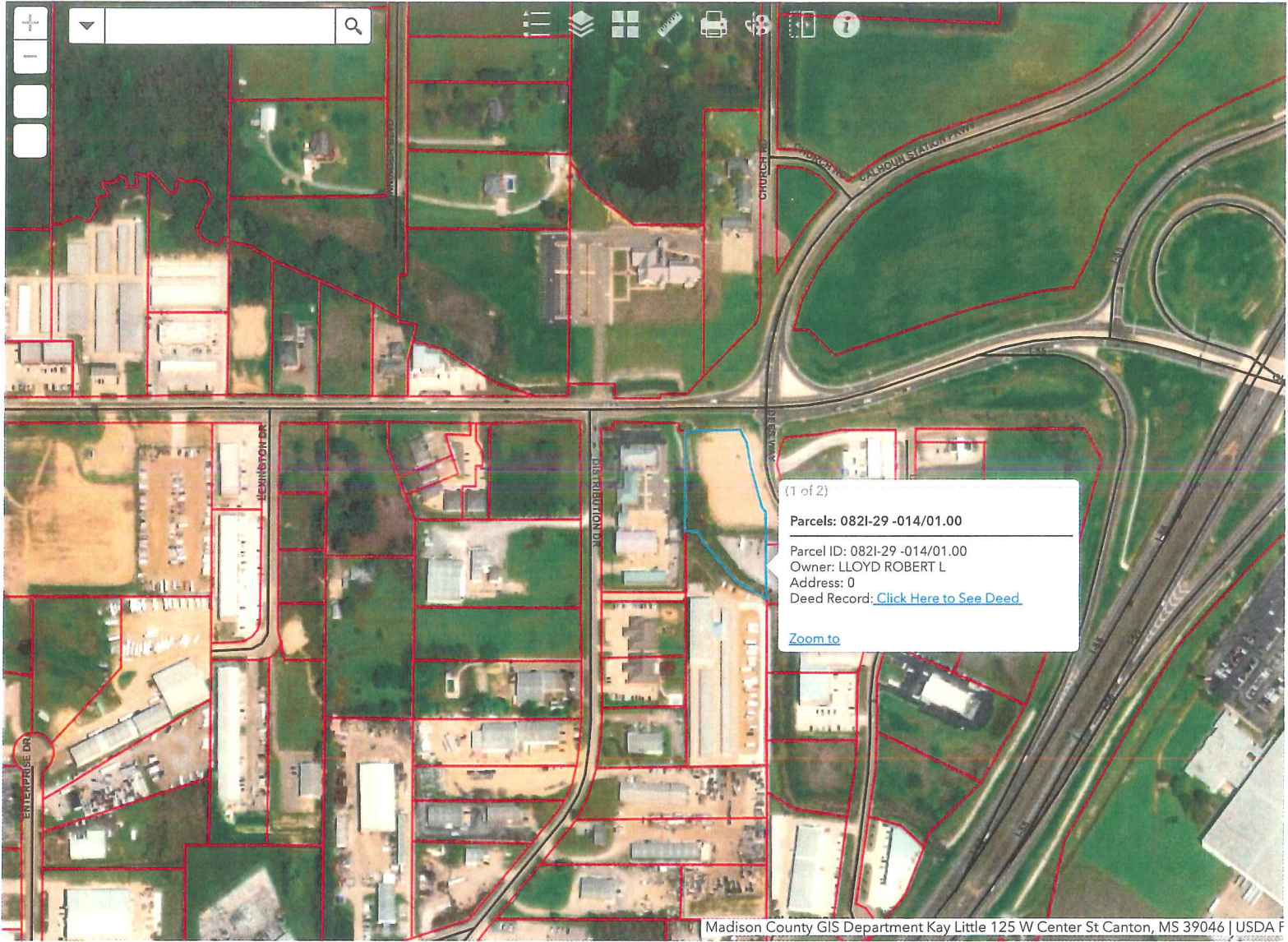
48" Pipe storage incoming, invert = 266.5 +/-

12" outlet pipe, invert = 266.3 +/-

# JUNCTION BOX

N.T.S.

PRELIMINARY - NOT FOR CONSTRUCTION



300ft

-90.104 32.517 Degrees